

ICON BEACH

WATERFRONT RESIDENCES

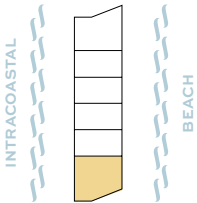
TH1

3 Bedroom, 3.5 Bathroom

Interior: 2,540 SF / 235.97 M²

Balcony: 1,225 SF / 113.81 M²

Total: 3,765 SF / 349.78 M²



2ND LEVEL



GROUND FLOOR

Sales Gallery
3660 S Ocean Drive, Hollywood, Florida 33019
954-212-9145
IconBeachResidences.com



3724 S Ocean Drive Condominium, a Condominium within a portion of a building or within a multiple parcel building (the "Condominium") is developed by Diplomat Landings Phase 1 Owner, LLC ("Developer"). These renderings and depictions are conceptual only and are for the convenience of reference and including artists renderings. They should not be relied upon as representations, express or implied, of the final detail of the residences or the Condominium. The developer expressly reserves the right to make modifications, revisions, and changes it deems desirable in its sole and absolute discretion. All residence features and building amenities are subject to change, including, without limitation, changes in manufacturers, brands, amenities, services and/or the design team. The dimensions stated for this floor plan are approximate because there are various recognized methods for calculating the square footage of a unit. The square footage stated here is calculated from the exterior boundaries of the exterior walls to the centerline of interior demising walls without deductions for cutouts, curves, or architectural features. This method typically results in quoted dimensions greater than the dimensions that would be determined by using other accepted methods. The definition of "Unit" and the calculation method to be relied upon is set forth by the Developer in Developer's prospectus which method may result in a square footage calculation less than the result of the calculation method used here. Consult the Developer's prospectus to learn what is included with Unit purchase and to understand Unit dimensions. 2024 © Diplomat Landings Phase 1 Owner, LLC, with all rights reserved.

ICON BEACH

WATERFRONT RESIDENCES

TH2—5

2 Bedroom, 2.5 Bathroom

Interior: 1,835 SF / 170.48 M²

Balcony: 603 SF / 56.02 M²

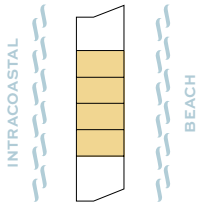
Total: 2,438 SF / 226.50 M²



2ND LEVEL



GROUND FLOOR



Sales Gallery
3660 S Ocean Drive, Hollywood, Florida 33019
954-212-9145
IconBeachResidences.com



3724 S Ocean Drive Condominium, a Condominium within a portion of a building or within a multiple parcel building (the "Condominium") is developed by Diplomat Landings Phase 1 Owner, LLC ("Developer"). These renderings and depictions are conceptual only and are for the convenience of reference and including artists renderings. They should not be relied upon as representations, express or implied, of the final detail of the residences or the Condominium. The developer expressly reserves the right to make modifications, revisions, and changes it deems desirable in its sole and absolute discretion. All residence features and building amenities are subject to change, including, without limitation, changes in manufacturers, brands, amenities, services and/or the design team. The dimensions stated for this floor plan are approximate because there are various recognized methods for calculating the square footage of a unit. The square footage stated here is calculated from the exterior boundaries of the exterior walls to the centerline of interior demising walls without deductions for cutouts, curves, or architectural features. This method typically results in quoted dimensions greater than the dimensions that would be determined by using other accepted methods. The definition of "Unit" and the calculation method to be relied upon is set forth by the Developer in Developer's prospectus which method may result in a square footage calculation less than the result of the calculation method used here. Consult the Developer's prospectus to learn what is included with Unit purchase and to understand Unit dimensions. 2024 © Diplomat Landings Phase 1 Owner, LLC, with all rights reserved.

ICON BEACH

WATERFRONT RESIDENCES

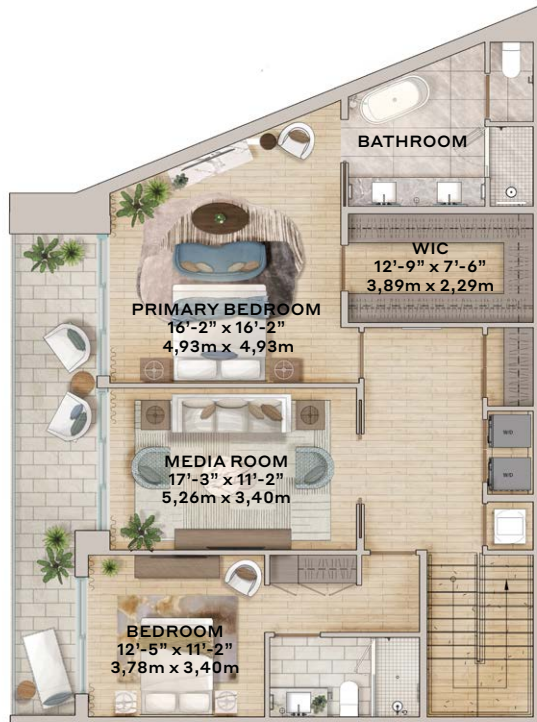
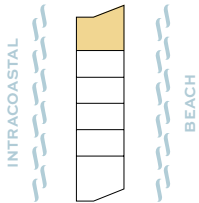
TH6

3 Bedroom, 3.5 Bathroom

Interior: 2,580 SF / 239.69 M²

Balcony: 941 SF / 87.42 M²

Total: 3,521 SF / 327.11 M²



Sales Gallery
 3660 S Ocean Drive, Hollywood, Florida 33019
 954-212-9145
 IconBeachResidences.com



3724 S Ocean Drive Condominium, a Condominium within a portion of a building or within a multiple parcel building (the "Condominium") is developed by Diplomat Landings Phase 1 Owner, LLC ("Developer"). These renderings and depictions are conceptual only and are for the convenience of reference and including artists renderings. They should not be relied upon as representations, express or implied, of the final detail of the residences or the Condominium. The developer expressly reserves the right to make modifications, revisions, and changes it deems desirable in its sole and absolute discretion. All residence features and building amenities are subject to change, including, without limitation, changes in manufacturers, brands, amenities, services and/or the design team. The dimensions stated for this floor plan are approximate because there are various recognized methods for calculating the square footage of a unit. The square footage stated here is calculated from the exterior boundaries of the exterior walls to the centerline of interior demising walls without deductions for cutouts, curves, or architectural features. This method typically results in quoted dimensions greater than the dimensions that would be determined by using other accepted methods. The definition of "Unit" and the calculation method to be relied upon is set forth by the Developer in Developer's prospectus which method may result in a square footage calculation less than the result of the calculation method used here. Consult the Developer's prospectus to learn what is included with Unit purchase and to understand Unit dimensions. 2024 © Diplomat Landings Phase 1 Owner, LLC, with all rights reserved.